



PRIMA

PARTNERSHIP FOR RESEARCH AND INNOVATION
IN THE MEDITERRANEAN AREA

Angelo Riccaboni-Mohamed El-Shinawi

Co-Chairs Fundación PRIMA, Barcelona

Why PRIMA

Environmental and social changes are deeply affecting Euro-Mediterranean agro-food systems and water resources.



Climate change, unsustainable agricultural practices, over-exploitation of natural resources, new lifestyle behaviors (diet, physical activity and socio-cultural) and low profitability of smallholders put a strain on the sustainable and healthy development of the Region, with major impacts on our



- The increased complexity and multidimensionality of such social, economic and environmental challenges can only be tackled through common efforts and resources with a research and innovation approach.



A large, faint background logo for PRIMA. It features a stylized olive branch with several leaves on the left, rising from a base that resembles a hand or a field. A large, thin arc curves over the branch. At the top left, there is a small, solid dark square.

PRIMA

**An integrated Research and Innovation Programme on
food systems and water resources**

19 Countries, 11 EU and 8 SEMCs, and the EC

Equal footing through Governance and organisational
mechanisms

500 million euro budget over 7 years
managed by
PRIMA Foundation, located in Barcelona



PRIMA aims in short

1. To strengthen MED Area's knowledge and innovation base,
to meet water and food needs
2. To promote mutual understanding and capacity-building,
building bridges between nations
3. To foster economic growth in a sustainable and inclusive way

Key role of researchers, innovators, enterprises and
food value chains
to implement Agenda 2030



#PRIMA_EU

#OpenToTheWorld

PRIMA is recognisably the greatest achievement to date in Euro-Med cooperation in research and innovation. It will seek to ensure that two of people's most basic needs are met: **access to clean water and nutritious food.**

Commissioner for Science,
Research and Innovation

Carlos Moedas





Vision

**“ Inclusive, healthy and prosperous
Mediterranean societies through innovative
solutions in agro-food and water systems,
contributing, by the end of the programme,
to sustainable use of natural
resources, economic growth and
stability. ”**





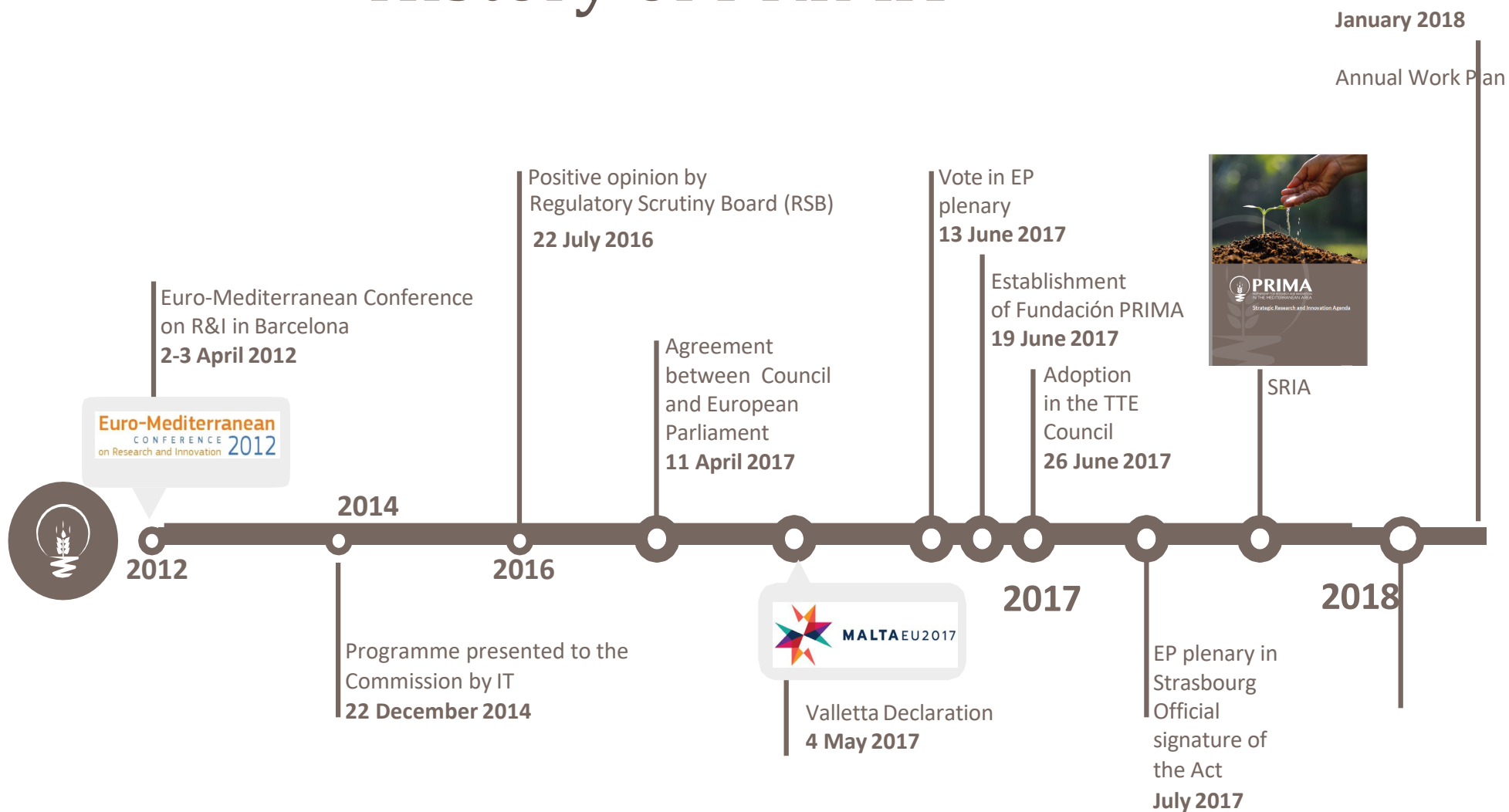
Mission

“ To achieve, support and promote integration, alignment and joint implementation of **R&I initiatives** under a **common** research and innovation **strategy** to address the diverse challenges in water scarcity, agriculture, food security

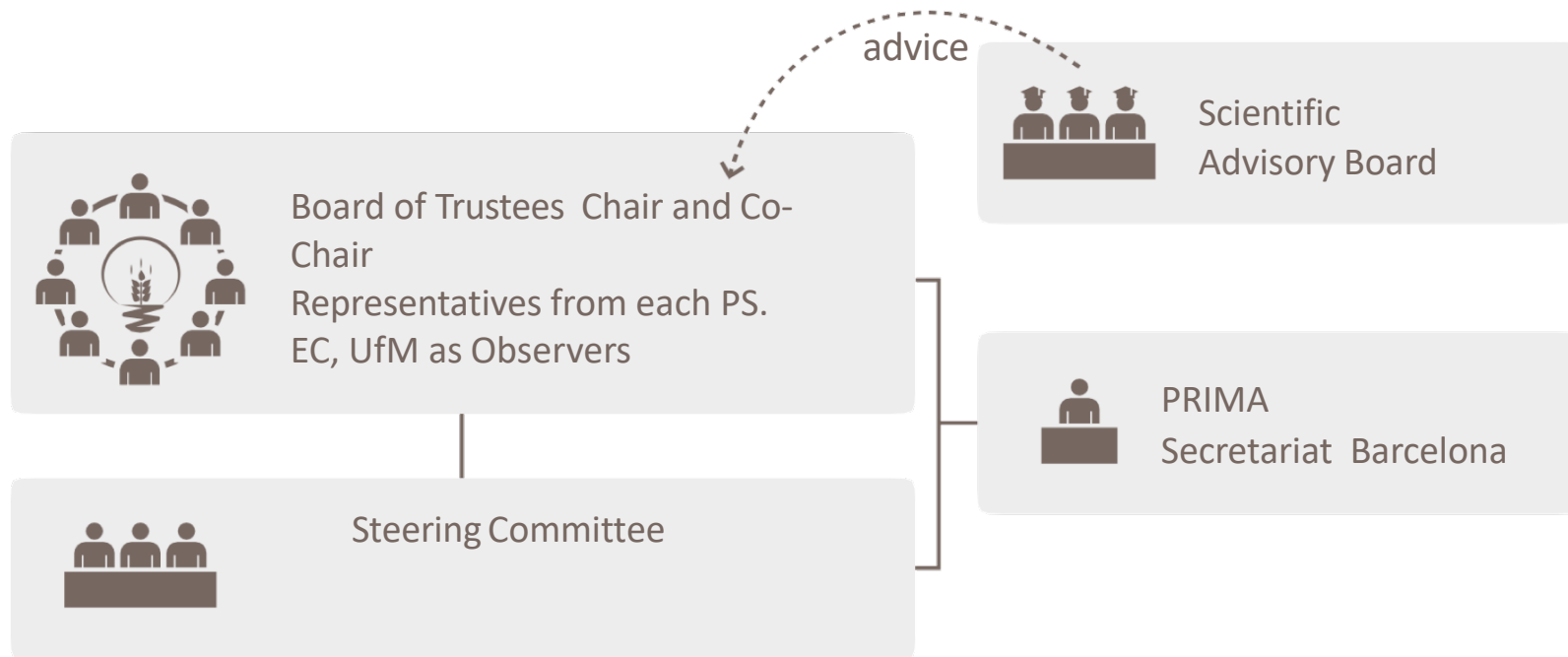
”



History of PRIMA



PRIMA Foundation Governance



PRIMA operates as an independent legal private entity



19 June 2017
Foundation under Spanish law



19 PSs members of
Foundation



Financial contribution
€ 274,000 PSs
€ 220.000 EU





PRIMA

PARTNERSHIP FOR RESEARCH AND INNOVATION
IN THE MEDITERRANEAN AREA

THANK YOU FOR YOUR ATTENTION

prima@unisi.it

<http://prima-med.org/>

Strategic Research and Innovation Agenda SRIA



3 Main Thematic Areas



- **MANAGEMENT OF WATER**

Integrated and **sustainable** management of water for arid and semi-arid Mediterranean areas



- **FARMING SYSTEMS**

Sustainable farming systems under Mediterranean environmental constraints



- **AGRO-FOOD VALUE CHAIN**

Sustainable Mediterranean agro-food value chain for regional and local development



Evaluation

- **Excellence:**
 - Clarity and pertinence of the objectives;
 - Soundness of the concept, and credibility of the proposed methodology;
 - Fit with the scope and objectives of the PRIMA programme and the call topic description;
 - Extent that the proposed work is beyond the state of the art, and demonstrates innovation potential (e.g. ground-breaking objectives, novel concepts and approaches, new products, services or business and organisational models)
 - Appropriate consideration of interdisciplinary approaches and, where relevant, use of stakeholder knowledge and gender dimension in research and innovation content.





Evaluation

- **Impact:**

- The extent to which the outputs of the project would contribute to one or several of the expected impacts mentioned in this document under the relevant topic.
- Enhance innovation capacity, create new market opportunities, strengthen competitiveness and growth of companies, address issues related to climate change or the environment, or bring other important benefits for society;
 - Quality of the proposed measures to: Exploit and disseminate the project results (including management of IPR), and to manage research data where relevant.
 - Communicate the project activities to different target audiences.





Evaluation

- **Quality and Efficiency of the Implementation**
(Stage 2 of Proposals Submission)
 - Quality and effectiveness of the work plan, including extent to which the resources assigned to work packages are in line with their objectives and deliverables;
 - Appropriateness of the management structures and procedures, including risk and innovation management;
 - Complementarity of the participants and extent to which the consortium as whole brings together the necessary expertise;
 - Appropriateness of the allocation of tasks, ensuring that all participants have a valid role and adequate resources in the project to fulfil that role.





We encourage you to....

Register as a PRIMA Expert

We are pleased to inform you that the PRIMA website now features a new "**Register as an Expert**" section, where prospective independent expert evaluators can register and create a personal profile.

This tool will help the PRIMA Secretariat build its own database of experts, with the purpose of selecting relevant profiles who can be entrusted with the evaluation of project proposals and other tasks.

You can click on the following link to see this new section of the website:

<http://prima-a.b.wetopi.com/register-as-an-expert/>





PRIMA

PARTNERSHIP FOR RESEARCH AND INNOVATION
IN THE MEDITERRANEAN AREA

THANK YOU FOR YOUR ATTENTION

prima@unisi.it

<http://prima-med.org/>