



National Council for Scientific Research



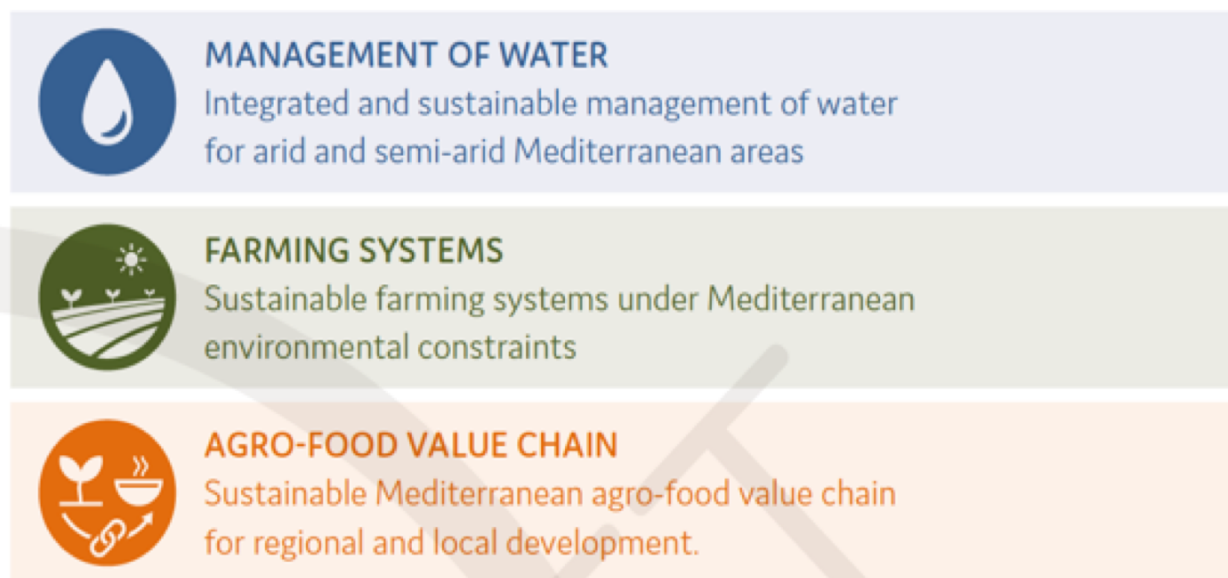
PRIMA

PARTNERSHIP FOR RESEARCH AND INNOVATION
IN THE MEDITERRANEAN AREA

PRIMA Launch & Stakeholder Information Session
March 12, 2018

Dr. Mouïin Hamzé & Ms. Rula Atweh
National Council for Scientific Research-Lebanon (CNRS-L)

The calls for proposals are part of the PRIMA Annual Work Plan 2018; which covers the priorities described in the **PRIMA Research and Innovation Agenda** (SRIA) under the three PRIMA thematic areas:



PRIMA programme activities will be implemented as follows:

SECTION 1: Actions and activities (Research & Innovation Actions (RIA), and Innovation actions (IA), as defined in the General Annexes of H2020) organized, managed and funded by PRIMA Foundation.

SECTION 2: Activities (Research and Innovation Activities (RIA) based on national rules) selected following transnational open and competitive calls for proposals, organized by PRIMA Foundation and funded by the national funding bodies of PS.

PRIMA: 2 Types of Calls and Funding

➤ **Section 1 Calls:**

Calls Funded by EU Contribution (Managed and Funded by Dedicated Implementation Structure / DIS)

- Require participation from at least 1 EU & 1 MPC Country
- Approximately 25% of funding targeted to MPCs
- Encourages MPC Leadership in Projects

THEMATIC AREA: Management of water

TOPIC: Water reuse and water desalination for agricultural and food production

TYPE OF ACTION: Research and Innovation Action (RIA)

Up to 3 Projects will be accepted for funding (around 2 million each)

THEMATIC AREA: Farming systems

TOPIC: Improving the sustainability of Mediterranean agro-ecosystems

TYPE OF ACTION: RIA Research and Innovation action

Up to 3 Projects will be accepted for funding (around 2 million each)

THEMATIC AREA: Agro-Food value chain

Topic: Implementing innovation in Mediterranean Agro-food chains by smallholders and SMEs

Type of action: Innovation action (IA)

Up to 3 Projects will be accepted for funding (around 2 million each)

PRIMA: 2 Types of Calls and Funding

➤ **Section 2 Calls:**

Calls Funded by National Contribution (Calls Managed by DIS, Funded Nationally)

- Require participation from at least 1 EU & 1 MPC Country
- Encourage MPC leadership in Projects
- Co-funding with Lebanese Institutions

Thematic area 1: Sustainable water management for arid and semi-arid Mediterranean area

Topic 1.1.1: Water resources availability and quality within catchments and aquifers.

Topic 1.1.2: Sustainable, integrated water management.

Thematic area 2: Sustainable farming systems under Mediterranean environmental constraints

Topic 1.2.1: Adaptation of agriculture to climate change.

Topic 1.2.2: Preventing emergence of animal and plant diseases.

Thematic area 3: Mediterranean Food Value Chain for regional and local development

Topic 1.3.1: Valorizing food products from traditional Mediterranean diet.

Topic 1.3.2: Food Safety in local food chains.

Topic 1.3.3: Implications of dietary shifts and sustainable diets for the Mediterranean populations and food industry.

Section 1 Calls:

Pre-proposal Phase: April 17, 2018 (17:00h CET)

Full Proposal Phase: September 15, 2018 (17:00h CET)

Section 2 Calls:

Pre-proposal Phase: March 27, 2018 (17:00 h CET)

Full Proposal Phase: September 4, 2017 (17:00h CET)

Documents for stage 1:

- ✓ Administrative data (to fill in directly on the Electronic Submission System/ESS)
- ✓ Scientific document (template to be uploaded as pdf on the ESS)
- ✓ Global budget (total cost and required amount to PRIMA for each partner to fill in directly on the ESS)
- ✓ **For Section 2 Calls Only - National Commitment Form (CNRS-L)**

Documents for stage 2:

- ✓ Administrative data (to fill indirectly on the ESS)
- ✓ Detailed Scientific document (template to be uploaded as pdf on the ESS)
- ✓ Detailed budget (template to be uploaded as an Excel file in the ESS)
- ✓ CVs (template to be uploaded as pdf on the ESS)
- ✓ **For Section 2 Calls Only - National Commitment Form (CNRS-L)**

One month before the deadline for submission, the link to the Electronic submission System will be announced on the PRIMA web page.

Template for Pre-Proposal (Available Online)

Part 1:

- Administrative data of participant organisations
- General information of the pre-proposal: Call, Topic, Duration, Keywords and Abstract
- Declarations/Confirmations
- General Budget

Part 2: (10 Pages Max)

- **Excellence:**
 - 1.1 Objectives
 - 1.2 Relation to call and topic
 - 1.3 Concept and methodology
 - 1.4 Ambition
- **Impact:**
 - 2.1 Expected impacts

- *An applicant cannot submit more than one proposal as **coordinator** in ALL the PRIMA calls but can be partner in different proposals.*
- ***The same proposal cannot be submitted to different calls.** Two proposals will be considered similar if 75% of the project in terms of objectives, methodology and consortium composition are identical.*

Section 2 Calls: National Rules

Eligible organizations:

- CNRS-L Research Centers, Research Centers recognized by the CNRS-L, and Universities - with priority for universities who signed joint agreements with the CNRS-L and the CNRS-L Charter of Ethics.

Consortium:

- The CNRS-L will fund a maximum of two Lebanese partners per proposal.

Conditions of proposals:

- Each individual can participate in more than one project but can be the main investigator in only one project.
- Key researchers should be included by name (and position) in the proposal to enable evaluation of their qualifications and experience. Researchers who have not been included by name at the proposal stage should be identified by scientific expertise.
- Applications should be submitted by full time staff through their institution.
- Encourage consortiums to include one of the CNRS-L Research Centers when the topic of the proposal is also addressed by the National Centre For Geophysical Research or the National Centre For Marine Sciences or the National Center For Remote Sensing or the Lebanese Atomic Energy Commission.
- Maximum Project Duration; **3 Years.**

Funding criteria

- The total Lebanese contribution for the present call is a maximum of 500,000 Euros (Cost sharing: 50% CNRS-L and 50% Lebanese Institutions).
- To be eligible for CNRS-L funding, all participating institutions are required to cost share 50% in any proposal.
- The CNRS-L contribution for each project cannot exceed **50%** of the total Lebanese requested budget, and ranging between 30,000 to 50,000 Euros per project.

Budget Lines	CNRS-L Upper Funding Limits (as Percentages)
<p data-bbox="604 461 894 526"><u>Personnel</u></p> <p data-bbox="88 610 1356 867">Indemnities for temporary research assistants and technicians only. Permanent staff is not allowed to charge salaries or any additional indemnities from the present project.</p> <p data-bbox="88 948 1163 997">PhD Scholarships: Co-Tutelle and Co-Direction</p> <p data-bbox="88 1013 1402 1403">* For inclusion of a PhD Student, the rules of the CNRS-L Scholarship Programme will apply. Please contact the CNRS-L for further details. PhD Candidates will need to undergo the selection process of the CNRS-L. It is recommended to co-fund the scholarship with other partners from the consortium.</p>	<p data-bbox="1549 672 1894 721">30% of Budget</p> <p data-bbox="1465 873 1982 1192">(Upper limit can reach 50% of Budget only in the case that a PhD Scholarship is included.)</p>

Budget Lines	CNRS-L Upper Funding Limits (as Percentages)
<p data-bbox="573 397 907 462"><u>Event Costs</u></p> <p data-bbox="107 560 1262 950">Expenses for local dissemination of results to the scientific community and society (organization of meetings and seminars). It is noted that activities relating to product commercialization or the protection of intellectual property rights are not covered.</p> <p data-bbox="107 1031 1346 1437">As the call for proposals highlights the importance of innovation, we strongly encourage participants to include, if possible, stakeholders, SMEs and Enterprises in their project events for the dissemination of their results, in order to be aligned with the call's purpose</p>	<p data-bbox="1522 885 1864 950">10% of Budget</p>

Budget Lines	CNRS-L Upper Funding Limits (as Percentages)
<p style="text-align: center;"><u>Travel Costs</u></p> <p>Includes <u>ticket</u> costs & insurance for travel of Lebanese partners (max. 5 day trip) for project events/project coordination. (Economy Tickets)</p> <p><u>Per Diem/Daily Allowance</u> Includes Daily Allowance for travel of Lebanese partners (max. 5 day trip) for project events/project coordination. (Max. 180 Euros/Day)</p> <p><u>Invitation to Foreign Researchers</u> Includes both tickets and daily subsistence for foreign experts (NOT PROJECT PARTNERS) to the project (max. 5 day trip). (Economy Tickets & Max. 180 Euros/Day)</p>	<p style="text-align: center;">25% of Budget</p>

Budget Lines	CNRS-L Upper Funding Limits (as Percentages)
<p><u>Consumables and Supplies</u> Expenses for consumables that are necessary for project implementation.</p> <p>General office material, printing paper, ink, CDs etc. are not included. Computer hardware and software are not considered as eligible</p>	20% of Budget
<p><u>Subcontracting</u> Can be included to subcontract a temporary expert/researcher (particularly for external expertise necessary for project implementation).</p>	10% of Budget
<p><u>Documentation</u> Printing of publications, publication of articles in technical and scientific journals</p>	5% of Budget
<p><u>Other Costs</u></p>	5% of Budget

Budget Lines	CNRS-L Upper Funding Limits (as Percentages)
Durable Equipment	Can be included on Institution/s Budget (up to 10%) but are <u>Not Applicable</u> for CNRS-L Reimbursement.
Operating Costs	Not Applicable for CNRS-L Funding
Shipping Costs	
Communication Costs	
Indirect Costs/Overheads	

For any additional information, CNRS rules on Grant Research Project and scholarships will be applied.

*CNRS-L may request **Budget Revisions** from participating institutions*

Commitment Letter (Template Available)

TOTAL Budget for the proposal: **50,000.00** Euros (100%)

Requested Contribution from the CNRS-L: **25,000.00** Euros (50%)

Committed Contribution from (Cost Sharing) **25,000.00** Euros (50%)

- Hosting the project activities (facilities, equipment and technical functions for project implementation),
- Commitment of staff time and effort for the project,
- Financial (in-cash) commitment of the organization
- Commitment for financial reporting to the CNRS-L
 - *Original Invoices (CNRS-L Contribution) + Copies of Invoices (Institutional Cost-Sharing).*

SUBMIT AS SOON AS POSSIBLE!!!

We encourage you to....

Register as a PRIMA Expert

We are pleased to inform you that the PRIMA website now features a new "**Register as an Expert**" section, where prospective independent expert evaluators can register and create a personal profile.

This tool will help the PRIMA Secretariat build its own database of experts, with the purpose of selecting relevant profiles who can be entrusted with the evaluation of project proposals and other tasks.

You can click on the following link to see this new section of the website:

<http://prima-a.b.wetopi.com/register-as-an-expert/>

PRIMA Contact Points - Lebanon

Dr. Elise Noujeim

CNRS-Lebanon

enjeim@cnrs.edu.lb

Ms. Rula Atweh

CNRS-L Lebanon

rula.atweh@cnrs.edu.lb

PRIMA Website: <http://prima-med.org>

CNRS-L Website: www.cnrs.edu.lb



THANK YOU!



National Council for Scientific Research

Ms. Rula Atweh

National Council for Scientific Research-Lebanon (CNRS-L)

Programme Officer / International Cooperation

Member of H2020 National NCP Network

+961 1 840260 (Ext. 312)

rula.atweh@cnrs.edu.lb