



المعهد الفرنسي للشرق الأوسط

Éric VERDEIL, Ghaleb FAOUR and Mouin HAMZÉ

# ATLAS OF LEBANON

## New Challenges

After fifteen years of reconstruction in a relatively peaceful climate, from 1990 to 2004, Lebanon has experienced since 2005 several violent political episodes resulting from complex internal and external tensions. Since 2002, Lebanese and French scholars have collaborated to produce two versions of the Atlas of Lebanon, now adapted and translated in English. The richly illustrated book displays original maps and infographics to provide a rare vision of the country. It highlights the new main legacy of the civil war and the reconstruction, and underscores the new challenges linked to the unfolding of the Syrian crisis and its consequences on Lebanon, particularly because of the massive amount of refugees that have arrived in the country. The atlas assesses the fragile economy, the degraded environment, climate change and the failures of public infrastructure. The book ends with the analysis of the transformations in the management of the territory, with the retreat if not marginalization of the Lebanese state and the emergence of alternative actors, such as municipalities, local forces, but also civic mobilizations.

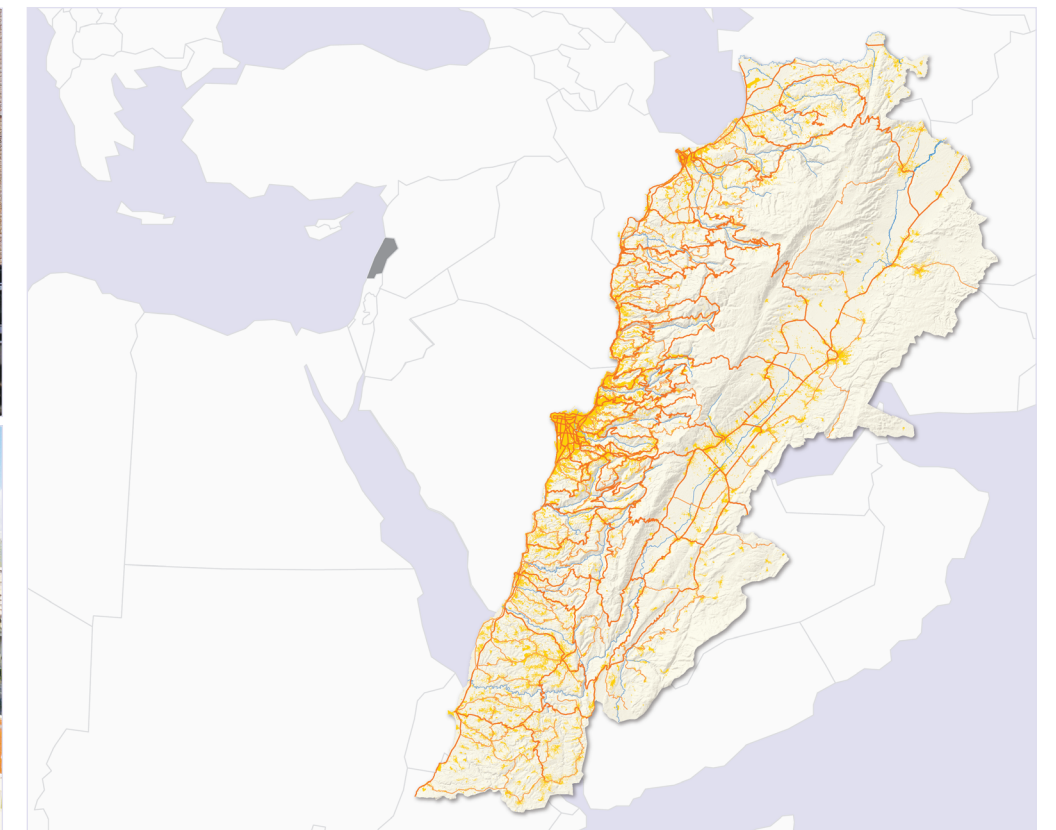
*Eric Verdeil is University Professor at CERI-Sciences Po, Paris. He used to be a research fellow at IFPO in Beirut.*

*Ghaleb Faour, Director of the National Center of Remote Sensing, at the National Council for Scientific Research of Lebanon.*

*Mouin Hamzé, General Secretary of the National Council for Scientific Research of Lebanon, Former Professor and Dean of the Faculty of Agronomy at the Lebanese University, President of the Institute for Agronomic Research, he has occupied key positions in several organizations such as CIHEAM, IAEA, ACARDA, CEDRE, ETC-ESCWA, AUF, COI and other euro-Mediterranean programmes.*

*Claire Gillette is a free lance cartographer. She did the mapping, adapted and translated the content of this English version of the two successive versions of the Atlas previously published in French (2007, 2016).*

ATLAS OF LEBANON New Challenges



Edited by

Eric Verdeil, Ghaleb Faour and Mouin Hamzé

Cartography by

Claire Gillette



9 782351 597477

CCO42 978-2-35159-747-7

ifpo

CNRS

2018

CNRS  
Conseil National de la Recherche Scientifique

Presses de l'ifpo