



National Council for Scientific Research



PRIMA

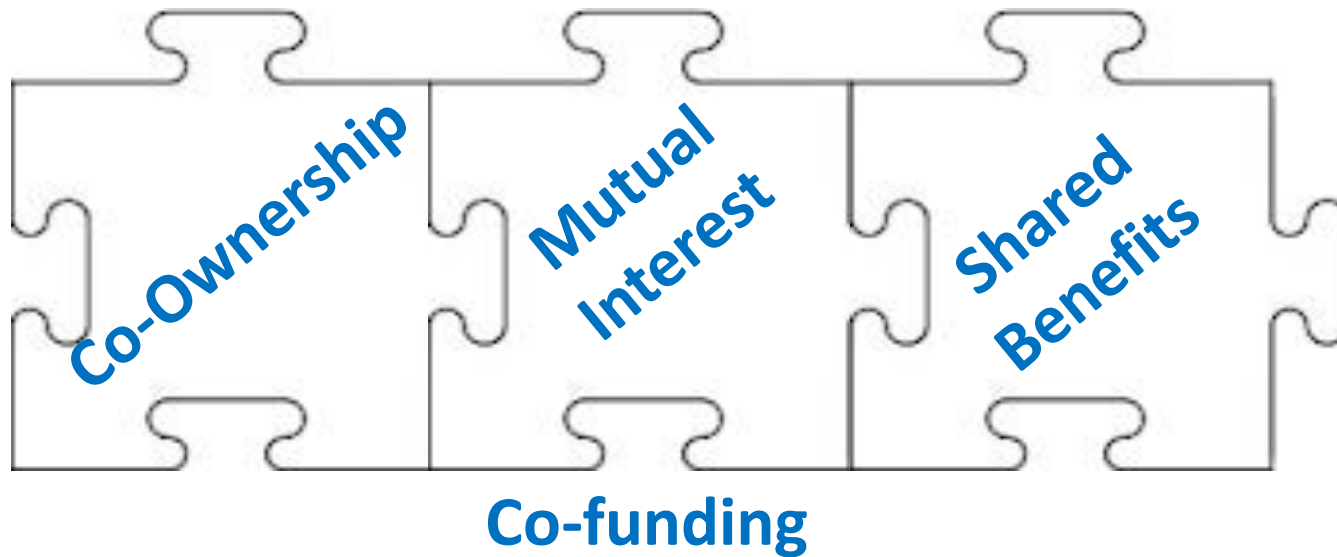
PARTNERSHIP FOR RESEARCH AND INNOVATION
IN THE MEDITERRANEAN AREA

**H2020 Information Session
February 15, 2018**

**Dr. Mouïñ Hamzé & Ms. Rula Atweh
National Council for Scientific Research-Lebanon (CNRS-L)**

In 2012...

The Euro-Mediterranean Conference on Research and Innovation organized by the European Commission in Barcelona on 2-3 April 2012 **underlined the importance of creating a frame of renewed partnership looking into a more substantial prospect of long-term and sustainable coordination.**



Priority Thematic Areas: Water / Energy / Food / Health / Transport / Marine Environment
Cross Cutting Issues: Strengthening Innovation / Science in a changing society / Building Capacities / Coordination of Initiatives



The Mediterranean Area is united by several common **challenges** to deal jointly, such as: **The need for sustainable production and provision of adequate quantity and quality of food and water**

A Joint programme co-financed by European Commission & Participating Countries on **Food systems and Water resources** for the development of inclusive, sustainable and healthy Euro-Mediterranean societies

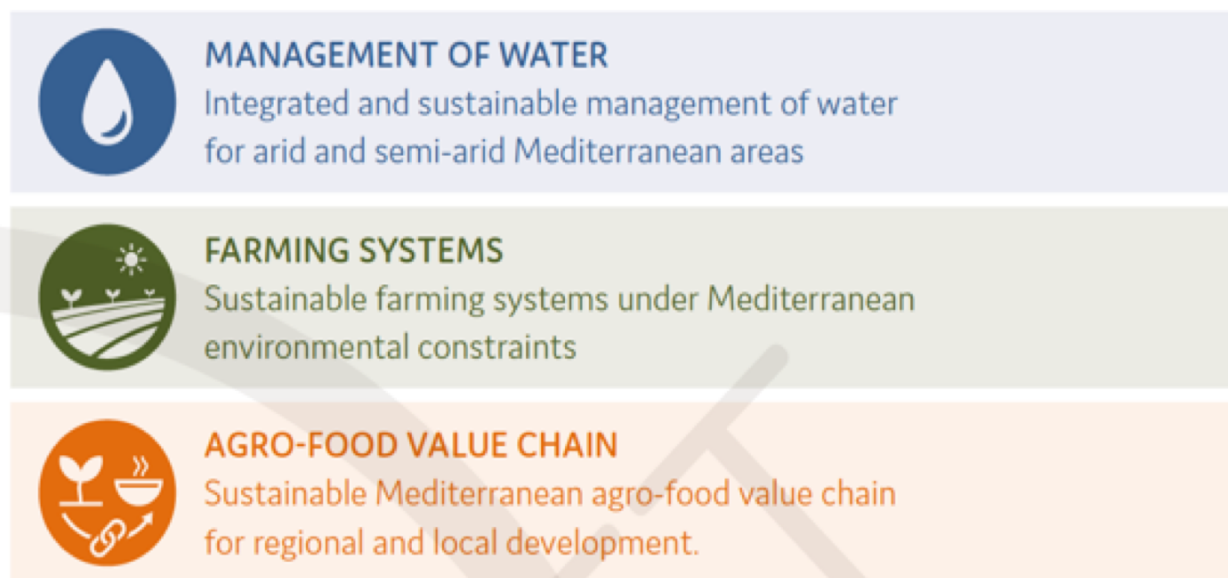
- PRIMA is the **most ambitious joint programme** ever to be undertaken by **both** sides of the Mediterranean.
- PRIMA will be implemented on the basis of the **principles of co-ownership, mutual interest, shared benefits and co-funding.**

PRIMA - main features and principles

- **Partnership based on** Equal footing, mutual interest and shared benefits among all participating countries: 11 EU States, 3 Associated Countries & **5 Mediterranean Partner Countries** (Algeria, Egypt, Jordan, Lebanon, Morocco)
- **Long-term orientation & continuity:** With a **10 year perspective** for research cooperation (Based on Yearly Calls - over 7 Years); ensuring continuity and active involvement of research stakeholders and actors.
- **Integration at different levels**
 - **Scientific level:** Multi-annual joint implementation of a common MED-wide strategic agenda optimizing national R&I activities and programmes.
 - **Management level: Dedicated Implementation Structure (DIS)** Joint management; reduction of transaction costs; avoid duplications; alignment of existing programmes
 - **Financial Level:** High level and solid financial commitments by participating states & EU

Funding for the €494 million partnership will come from the participating countries (around €274 million), matched by a €220 million contribution from the EU through its current research framework programme Horizon 2020.

The calls for proposals are part of the PRIMA Annual Work Plan 2018; which covers the priorities described in the **PRIMA Research and Innovation Agenda** (SRIA) under the three PRIMA thematic areas:



PRIMA programme activities will be implemented as follows:

SECTION 1: Actions and activities (Research & Innovation Actions (RIA), and Innovation actions (IA), as defined in the General Annexes of H2020) organized, managed and funded by PRIMA Foundation.

SECTION 2: Activities (Research and Innovation Activities (RIA) based on national rules) selected following transnational open and competitive calls for proposals, organized by PRIMA Foundation and funded by the national funding bodies of PS.

PRIMA: 2 Types of Calls and Funding

➤ **Section 1 Calls:**

Calls Funded by EU Contribution (Managed and Funded by Dedicated Implementation Structure / DIS)

- Require participation from at least 1 EU & 1 MPC Country
- Approximately 25% of funding targeted to MPCs
- Encourages MPC Leadership in Projects

THEMATIC AREA: Management of water

TOPIC: Water reuse and water desalination for agricultural and food production

TYPE OF ACTION: Research and Innovation Action (RIA)

Up to 3 Projects will be accepted for funding (around 2 million each)

THEMATIC AREA: Farming systems

TOPIC: Improving the sustainability of Mediterranean agro-ecosystems

TYPE OF ACTION: RIA Research and Innovation action

Up to 3 Projects will be accepted for funding (around 2 million each)

THEMATIC AREA: Agro-Food value chain

Topic: Implementing innovation in Mediterranean Agro-food chains by smallholders and SMEs

Type of action: Innovation action (IA)

Up to 3 Projects will be accepted for funding (around 2 million each)

PRIMA: 2 Types of Calls and Funding

➤ **Section 2 Calls:**

Calls Funded by National Contribution (Calls Managed by DIS, Funded Nationally)

- Require participation from at least 1 EU & 1 MPC Country
- Encourage MPC leadership in Projects
- Co-funding with Lebanese Institutions

Thematic area 1: Sustainable water management for arid and semi-arid Mediterranean area

Topic 1.1.1: Water resources availability and quality within catchments and aquifers.

Topic 1.1.2: Sustainable, integrated water management.

Thematic area 2: Sustainable farming systems under Mediterranean environmental constraints

Topic 1.2.1: Adaptation of agriculture to climate change.

Topic 1.2.2: Preventing emergence of animal and plant diseases.

Thematic area 3: Mediterranean Food Value Chain for regional and local development

Topic 1.3.1: Valorizing food products from traditional Mediterranean diet.

Topic 1.3.2: Food Safety in local food chains.

Topic 1.3.3: Implications of dietary shifts and sustainable diets for the Mediterranean populations and food industry.

Section 1 Calls:

Pre-proposal Phase: April 17, 2018 (17:00h CET)

Full Proposal Phase: September 15, 2018 (17:00h CET)

Section 2 Calls:

Pre-proposal Phase: March 27, 2018 (17:00 h CET)

Full Proposal Phase: September 4, 2017 (17:00h CET)

Documents for stage 1:

- ✓ Administrative data (to fill in directly on the Electronic Submission System/ESS)
- ✓ Scientific document (template to be uploaded as pdf on the ESS)
- ✓ Global budget (total cost and required amount to PRIMA for each partner to fill in directly on the ESS)
- ✓ **For Section 2 Calls Only - National Commitment Form (CNRS-L)**

Documents for stage 2:

- ✓ Administrative data (to fill indirectly on the ESS)
- ✓ Detailed Scientific document (template to be uploaded as pdf on the ESS)
- ✓ Detailed budget (template to be uploaded as an Excel file in the ESS)
- ✓ CVs (template to be uploaded as pdf on the ESS)
- ✓ **For Section 2 Calls Only - National Commitment Form (CNRS-L)**

One month before the deadline for submission, the link to the Electronic submission System will be announced on the PRIMA web page.

Template for Pre-Proposal (Available Online)

Part 1:

- Administrative data of participant organisations
- General information of the pre-proposal: Call, Topic, Duration, Keywords and Abstract
- Declarations/Confirmations
- General Budget

Part 2: (10 Pages Max)

- **Excellence:**
 - 1.1 Objectives
 - 1.2 Relation to call and topic
 - 1.3 Concept and methodology
 - 1.4 Ambition
- **Impact:**
 - 2.1 Expected impacts

- *An applicant cannot submit more than one proposal as **coordinator** in ALL the PRIMA calls but can be partner in different proposals.*
- ***The same proposal cannot be submitted to different calls.** Two proposals will be considered similar if 75% of the project in terms of objectives, methodology and consortium composition are identical.*

Section 2 Calls: National Rules

Eligible organizations:

- CNRS-L Research Centers, Research Centers recognized by the CNRS-L, and Universities - with priority for universities who signed joint agreements with the CNRS-L and the CNRS-L Charter of Ethics.

Consortium:

- The CNRS-L will fund a maximum of two Lebanese partners per proposal.

Conditions of proposals:

- Each individual can participate in more than one project but can be the main investigator in only one project.
- Key researchers should be included by name (and position) in the proposal to enable evaluation of their qualifications and experience. Researchers who have not been included by name at the proposal stage should be identified by scientific expertise.
- Applications should be submitted by full time staff through their institution.
- Encourage consortiums to include one of the CNRS-L Research Centers when the topic of the proposal is also addressed by the National Centre For Geophysical Research or the National Centre For Marine Sciences or the National Center For Remote Sensing or the Lebanese Atomic Energy Commission.

Funding criteria

- The total Lebanese contribution for the present call is a maximum of 500,000 Euros (Cost sharing: 50% CNRS-L and 50% Lebanese Institutions).
- To be eligible for CNRS-L funding, all participating institutions are required to cost share 50% in any proposal.
- The CNRS-L contribution for each project cannot exceed **50%** of the total Lebanese requested budget, and ranging between 30,000 to 50,000 Euros per project.

*Eligible Costs are highlighted in the PRIMA National Rules (Lebanon)
For any additional information, CNRS rules of Grant Research and Scholarship
Programmes of will be applied.*

Commitment Letter (Template Available)

TOTAL Budget for the proposal: ---,---.00 Euros (100%)

Requested Contribution from the CNRS-L: ---,---.00 Euros (50%)

Committed Contribution from (Cost Sharing) ---,---.00 Euros (50%)

- Hosting the project activities (facilities, equipment and technical functions for project implementation),
- Commitment of staff time and effort for the project,
- Financial (in-cash) commitment of the organization,
- Commitment for financial reporting to the CNRS-L

PRIMA Contact Points - Lebanon

Dr. Elise Noujeim

CNRS-Lebanon

enjeim@cnrs.edu.lb

Ms. Rula Atweh

CNRS-L Lebanon

rula.atweh@cnrs.edu.lb

<http://prima-med.org/>

www.cnrs.edu.lb



PRIMA

PARTNERSHIP FOR RESEARCH AND INNOVATION
IN THE MEDITERRANEAN AREA

THANK YOU!



National Council for Scientific Research

Ms. Rula Atweh

National Council for Scientific Research-Lebanon (CNRS-L)

Programme Officer / International Cooperation

Member of H2020 National NCP Network

+961 1 840260 (Ext. 312)

rula.atweh@cnrs.edu.lb